

## Image in Medicine

Bhoomi Angirish<sup>1</sup>, Bhavin Jankharia<sup>2</sup>

### Quiz 1

**A 23-year-old male presented with Backache and Stiffness since long time.**

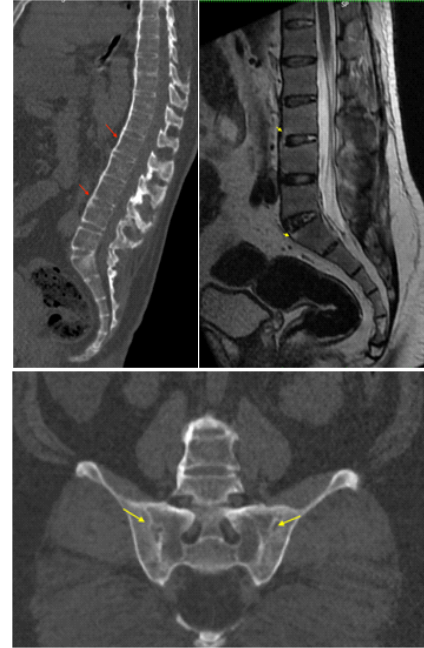
#### Questions :

- (1) What is the Diagnosis ?
- (2) What are the other associations with this condition?

#### Answers :

(1) Ossification of anterior longitudinal ligament (red arrow) and formation of syndesmophytes is seen. Bone marrow edema (short arrow) with reactive sclerosis is seen at corners of vertebral bodies. There is bilateral symmetrical fusion of sacroiliac joints (yellow arrow). These imaging findings are suggestive of Ankylosing spondylitis.

(2) The other systemic associations with ankylosing spondylitis are anterior uveitis, psoriasis, inflammatory bowel disease, interstitial lung disease, aortitis etc.



### Quiz 2

**A 26-year-old female presented with Flank Pain and Hematuria. She also had history of Seizures.**

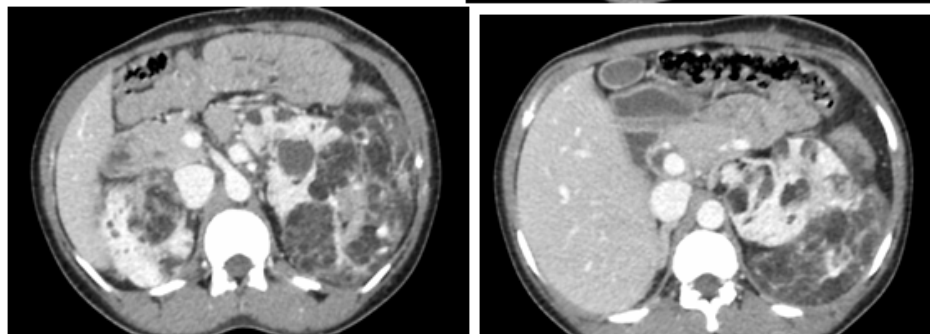
#### Questions :

- (1) What is the Diagnosis ?
- (2) What are the common syndromic associations of this lesion?

#### Answers :

(1) Innumerable varying sized fat density lesions with enhancing soft tissue density areas are seen in both kidneys suggestive of Angiomyolipomas.

(2) Angiomyolipomas are the most common benign solid renal lesion. The majority of angiomyolipomas are sporadic and are



typically identified in adults . The remaining are seen in association with phakomatoses, vast majority are seen with tuberous sclerosis. Angiomyolipomas are also found with von-Hippel-Lindau Syndrome and Neurofibromatosis type 1.

Department of Radiology, Picture This by Jankharia,  
Mumbai, Maharashtra 400004

<sup>1</sup>MD, DNB (Radiology)

<sup>2</sup>MD, DMRD (Radiology)