

Image in Medicine

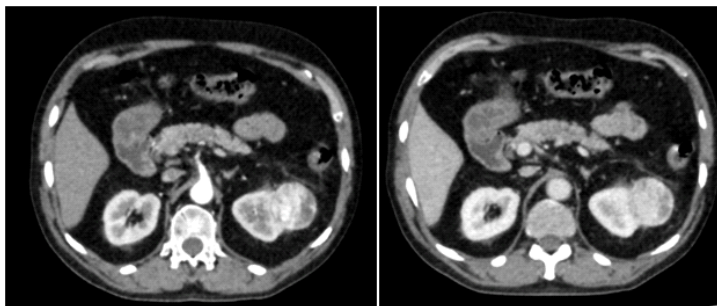
Bhoomi Angirish¹, Bhavin Jankharia²

Quiz 1

A 48-year-old male presented with haematuria and loin pain since 10 days.

Questions :

- (1) What is the diagnosis ?
- (2) What are the hereditary associations ?
- (3) What is RENAL nephrometry scoring system ?



Answers :

(1) A well defined enhancing partly exophytic lesion is seen arising from lateral cortex of left kidney suggestive of renal cell carcinoma.

(2) Hereditary renal cell cancer syndromes include Von Hippel Lindau syndrome, tuberous sclerosis, Birt-Hogg-Dube syndrome, sickle cell disease.

(3) The RENAL nephrometry scoring system is used to categorize renal masses into low, intermediate and high complexity. Its purpose is to aid in decision making, patient counseling, surgical planning, and patient follow-up, as well as academic reporting. It includes the following parameters:

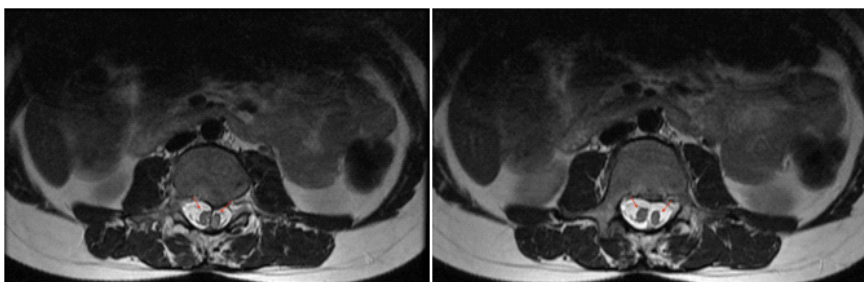
- a) Radius (maximum diameter) in centimeters (cm) in any axis
- b) Exophytic/endophytic tumor location.
- c) Nearness to the renal collecting system or renal sinus measured in millimeters (mm) as the shortest distance from the deepest point of the tumor.
- d) Anterior or posterior location - assessed on the axial view.
- e) Location relative to the renal poles

Quiz 2

A 18-year-old female presented with tingling and numbness in both lower limbs.

Questions :

- (1) What is the diagnosis ?
- (2) What is the classification?
- (3) What are the common associations of this condition?



Answers :

(1) A longitudinal split is seen in the cord separated by a septum, suggestive of diastematomyelia.

(2) Diastematomyelia or split cord malformations are divided into two types according to the presence of septum and single vs dual dural sac. Type I has duplicated

dural sac with common midline spur which can be fibrous or osseous. Type II is a single dural sac containing both hemicords.

(3) Diastematomyelia is frequently associated with other anomalies such as meningocele, neurenteric cyst, dermoid cyst, spinal cord lipoma.

Department of Radiology, Picture This by Jankharia,
Mumbai, Maharashtra 400004

¹MD, DNB (Radiology)

²MD, DMRD (Radiology)