

Image in Medicine

Bhoomi Angirish¹, Bhavin Jankharia²

Quiz 1

Hysterosalpingogram of a 29 year female who presented with recurrent pregnancy loss.

Questions :

- (1) What is the diagnosis ?
- (2) Name the Mullerian duct anomalies?

Answers :

(1) Hysterosalpingogram shows two widely divergent endometrial cavities with one cervical canal suggestive of bicornuate unicollis uterus.

(2) Mullerian duct anomalies are congenital abnormalities that occur due to complete agenesis, defective fusion or resorption failure of Mullerian (paramesonephric) ducts. These are classified as :

- Class I :** Uterine agenesis / hypoplasia.
- Class II :** Unicornuate uterus
- Class III :** Uterus didelphys
- Class IV :** Bicornuate uterus
- Class V :** Septate uterus
- Class VI :** Arcuate uterus
- Class VII :** In utero diethylstilbestrol (DES) exposure (T-shaped uterus)



Quiz 2

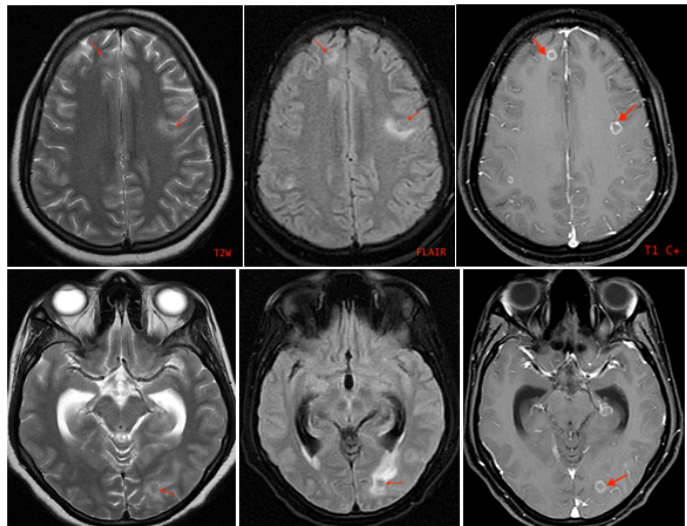
MRI brain of a 19 year old female who presented with low grade fever and convulsions.

Questions :

- (1) What is the diagnosis ?
- (2) What are the differential diagnosis of ring enhancing lesions?

Answers :

(1) Few well defined peripherally enhancing lesions which appear hypointense on T2W and FLAIR images with surrounding perilesional edema are seen in bilateral cerebral hemispheres. These imaging findings are suggestive of multiple tuberculomas.



(2) The common differential diagnosis of ring enhancing lesions are – Other infections (such as neurocysticercosis, cerebral toxoplasmosis, cerebral abscesses), cerebral metastases, CNS lymphoma.

Department of Radiology, Picture This by Jankharia,
Mumbai, Maharashtra 400004

¹MD, DNB (Radiology)

²MD, DMRD (Radiology)