

Image in Medicine

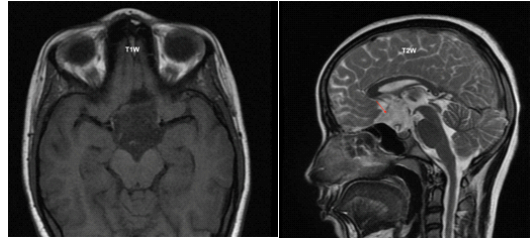
Bhoomi Angirish¹, Bhavin Jankharia²

Quiz 1

A 38-year-old female presented with Headache and Blurring of Vision since 4 month.

Questions :

- (1) What is the Diagnosis?
- (2) What are the other common locations of this lesion?
- (3) What are the differential Diagnosis?



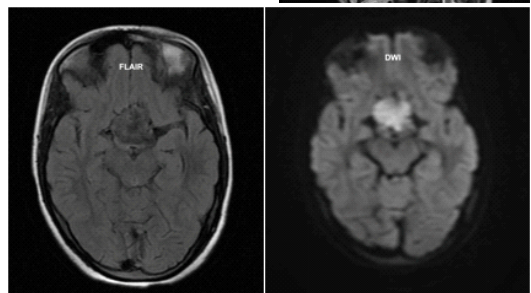
Answers :

(1) Well defined lobulated altered signal intensity lesion is seen the suprasellar cistern separate from the pituitary gland. Lesion appears isointense to CSF on T1W and T2W images, shows heterogeneous / dirty signal on FLAIR and shows restriction on DWI images. Findings are suggestive of suprasellar epidermoid cyst.

(2) The common locations of epidermoid cyst are cerebellopontine angle (40-50%), suprasellar cistern (10-15%), fourth ventricle (17%), middle cranial fossa and interhemispheric.

(3) The differentials for an epidermoid cyst are :

- (A) Arachnoid cyst – follows CSF signal on all sequences.
- (B) Dermoid cyst – often fat density and located along the midline.
- (C) Cystic tumours – solid component is usually seen.



Quiz 2

A 28-year-female presented with Proptosis of Right Eye and Nasal Blockage.

Questions :

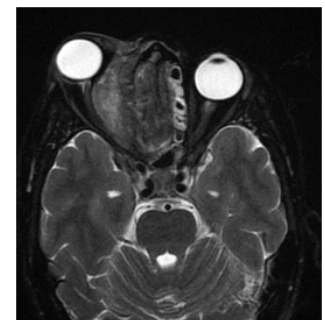
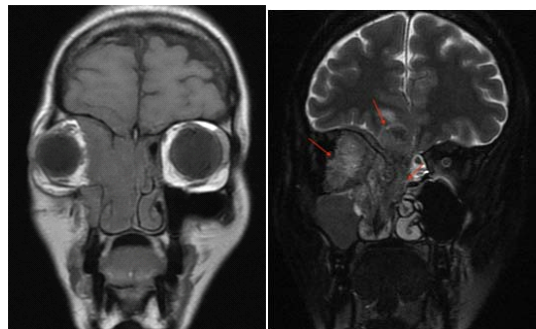
- (1) What is the Diagnosis?
- (2) What are the differential Diagnosis?

Answers :

(1) An aggressive soft tissue intensity lesion is seen with its epicentre in the superior olfactory recess involving ethmoid air cells, extending superiorly and infiltrating into anterior cranial fossa. Laterally the lesion extends into right orbit, encasing the extra-ocular muscles and causing proptosis of right eyeball. Biopsy of the lesion was done, which confirmed the diagnosis of olfactory neuroblastoma (esthesioneuroblastoma).

(2) The common differentials of such lesion are :

- A) Olfactory neuroepithelioma
- B) Olfactory groove meningioma
- C) Sinonasal carcinoma – usually in older patients while olfactory neuroblastoma shows bimodal peaks in 2nd decade and 5th-6th decade.
- D) Nasopharyngeal carcinoma – usually older patients



Department of Radiology, Picture This by Jankharia,

Mumbai, Maharashtra 400004

¹MD, DNB (Radiology)

²MD, DMRD (Radiology)