

## Image in Medicine

**Bhoomi Angirish<sup>1</sup>, Bhavin Jankharia<sup>2</sup>**

### Quiz 1

**CT Brain Angiogram images of a 42-year-old Female Patient who presented with Headache.**

**Questions :**

- (1) What is the diagnosis?  
(2) What are the common locations?

**Answers :**

(1) Well defined round outpouching is seen from the junction of M1-M2 segment of right middle cerebral artery suggestive of saccular cerebral aneurysm.

(2) The common locations of cerebral aneurysm are:

**Anterior circulation : more common**

a) Anterior cerebral artery /Anterior Communicating artery

b) Supraclinoid Internal carotid artery and ICA/Posterior Communicating artery junction

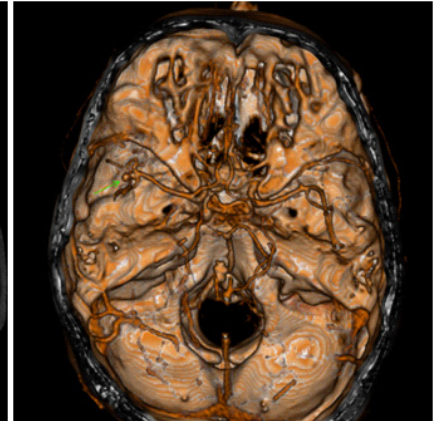
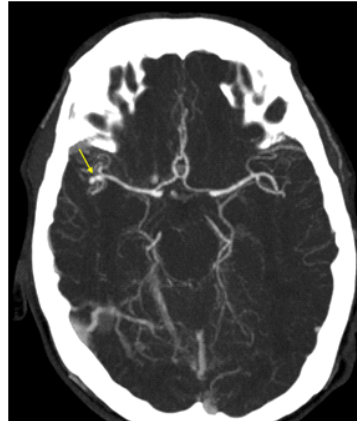
c) Middle cerebral artery (M1/M2 junction) bi/trifurcation

**Posterior circulation :**

d) Basilar tip

e) Superior cerebellar artery

f) Posterior inferior cerebellar artery



### Quiz 2

**CT Scan Images of a 28-year-old Male who presented with Abdominal Pain since 5 months.**

**Questions :**

- (1) What is the diagnosis?  
(2) Name the signs of ruptured endocyst.

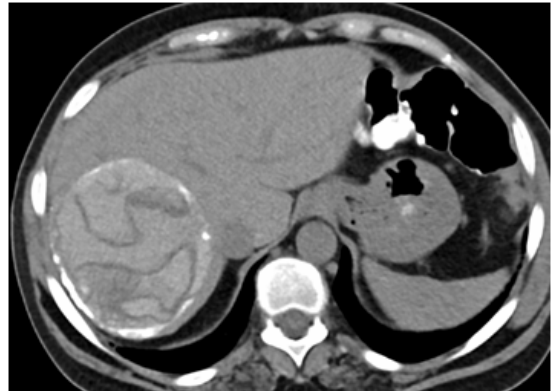
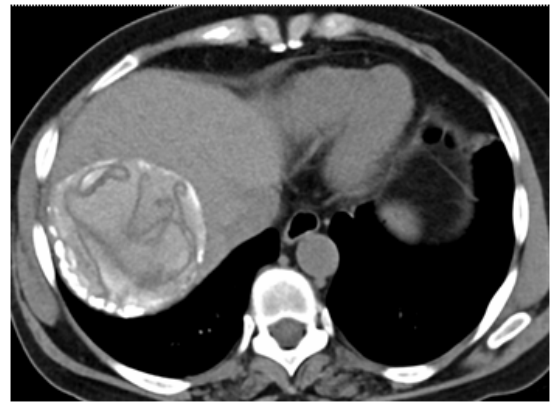
**Answers :**

(1) Well defined partially calcified cystic lesion with internal hyperdense contents and multiple curvilinear serpentine membranes is seen in right lobe of liver, these imaging findings are suggestive of hepatic hydatid cyst.

(2) A) Serpent (snake) sign: Wavy membranes within the cyst.

B) Spin (whirl) sign: Twisting membranes within the cyst.

C) Congealed water lily or ball of wool sign: Solid conglomeration of membranes settled in the dependent portion of the cyst.



Department of Radiology, Picture This by Jankharia,  
Mumbai, Maharashtra 400004

<sup>1</sup>MD, DNB (Radiology)

<sup>2</sup>MD, DMRD (Radiology)