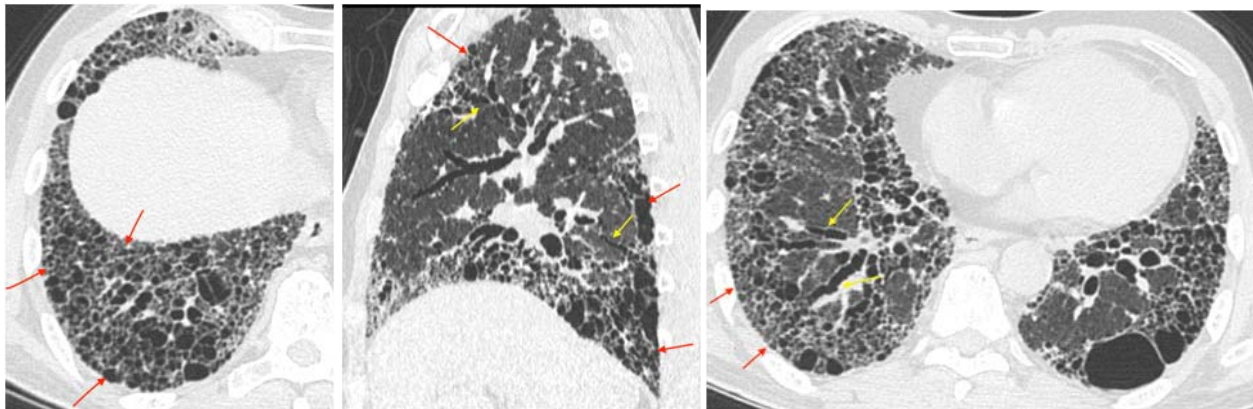


Image in Medicine

Quiz 1

Bhoomi Angrish¹, Bhavin Jankharia²



CT scan images of a 70-years old man with 2 years history of progressive dyspnea

Questions :

(1) Name the sign shown by red arrow.

(2) What pattern is shown?

(3) In view of clinical history, what is the most likely diagnosis?

Answers:

(1) **Honeycombing** — It refers to clustered, thin/thick walled cystic spaces usually of similar diameters (3-10mm, but occasionally larger), in stacks of 2 or more, usually peripheral. It may also present as a single layer.

(2) **UIP pattern** — HRCT features frequently seen in UIP pattern include honeycombing, traction bronchiectasis/ bronchiolectasis (shown by yellow arrow), which may be seen with the concurrent presence of fine reticulation. The typical distribution of UIP is subpleural with basal predominance, although some upper lobe involvement is common.

(3) **Idiopathic pulmonary fibrosis (IPF) is the most likely diagnosis** — UIP is the hallmark radiologic pattern of IPF.

Quiz 2

Questions:

(1) What is the diagnosis?

(2) What are the differential diagnosis?

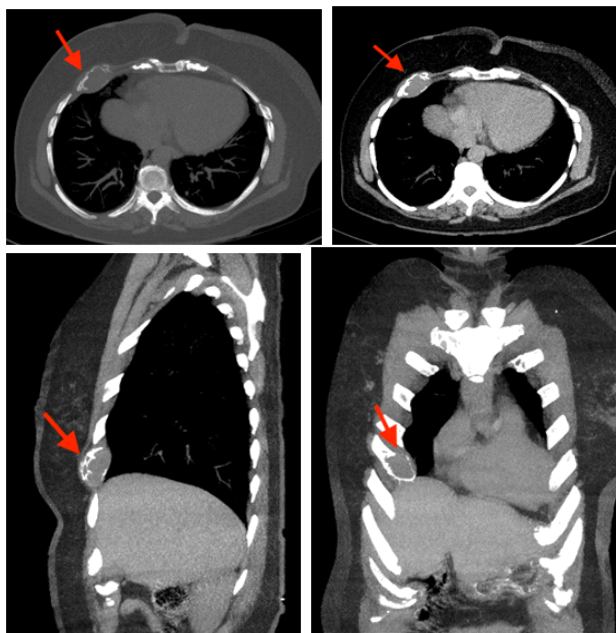
(3) What is plasmacytoma?

Answers:

(1) A well-defined expansile osteolytic lesion in anterior aspect of right 5th rib. An image guided biopsy was performed from the lesion. It was plasmacytoma of rib.

(2) The differential diagnosis of osteolytic lesion at this age would include- metastasis, myeloma and lymphoma. Biopsy is must to arrive at a conclusive diagnosis.

(3) Plasmacytomas are plasma cell tumour, localised to bone which have a predisposition for red marrow-containing axial skeleton. The peak incidence is in 4th to 6th decade. They appear as expansile osteolytic lesion with thinning of cortex and absence of sclerotic reaction.



A 61 year old lady presented with pain over right anterior chest wall

Picture This by Jankharia, Mumbai, Maharashtra
¹MD, DNB (Radiology)
²MD, DMRD (Radiology)